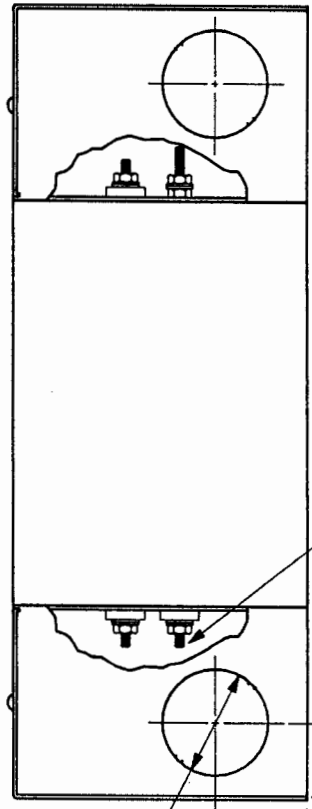
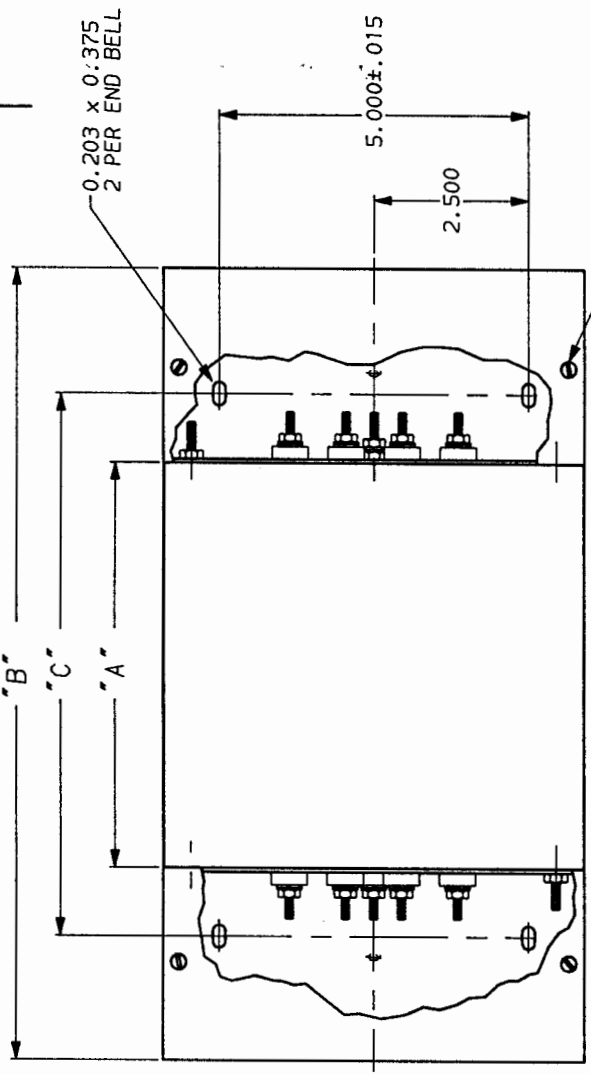
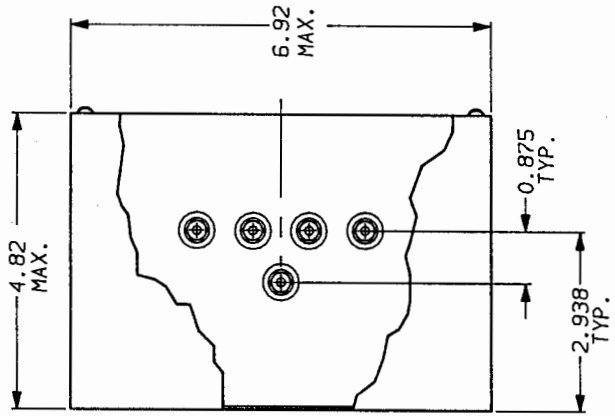


PART NO.	DIM. "A" MAX.	DIM. "B" MAX.	DIM. "C" ±.030
45/60AYP6C	7.16	13.610	9.656
45/60AYT6C	11.58	18.030	14.076

SHEET 1 OF 1		
APPROVED	DATE	REV
<i>[Signature]</i>	11-30-87	2



END BELL KIT AA 407

corcom
LIBERTYVILLE, IL 60048

45AYP6C & 45AYT6C/60AYP6C & 60AYT6C WITH END BELLS

SCALE	DWG. NO.	DATE	REV.
.5x	9-13-88	9-13-88	2
DWG. BY	ORIGINATOR	CHKD. BY	REV.
LJD	HKP	LJD	45AYT6C-45AYP6C 02

This document is proprietary to CORCOM INC. and is not to be reproduced nor used for manufacturing purposes except on CORCOM's order or prior written consent.

NOTE: UNLESS OTHERWISE SPECIFIED, TOLERANCE TO BE ±.030